



# OnArchitecture

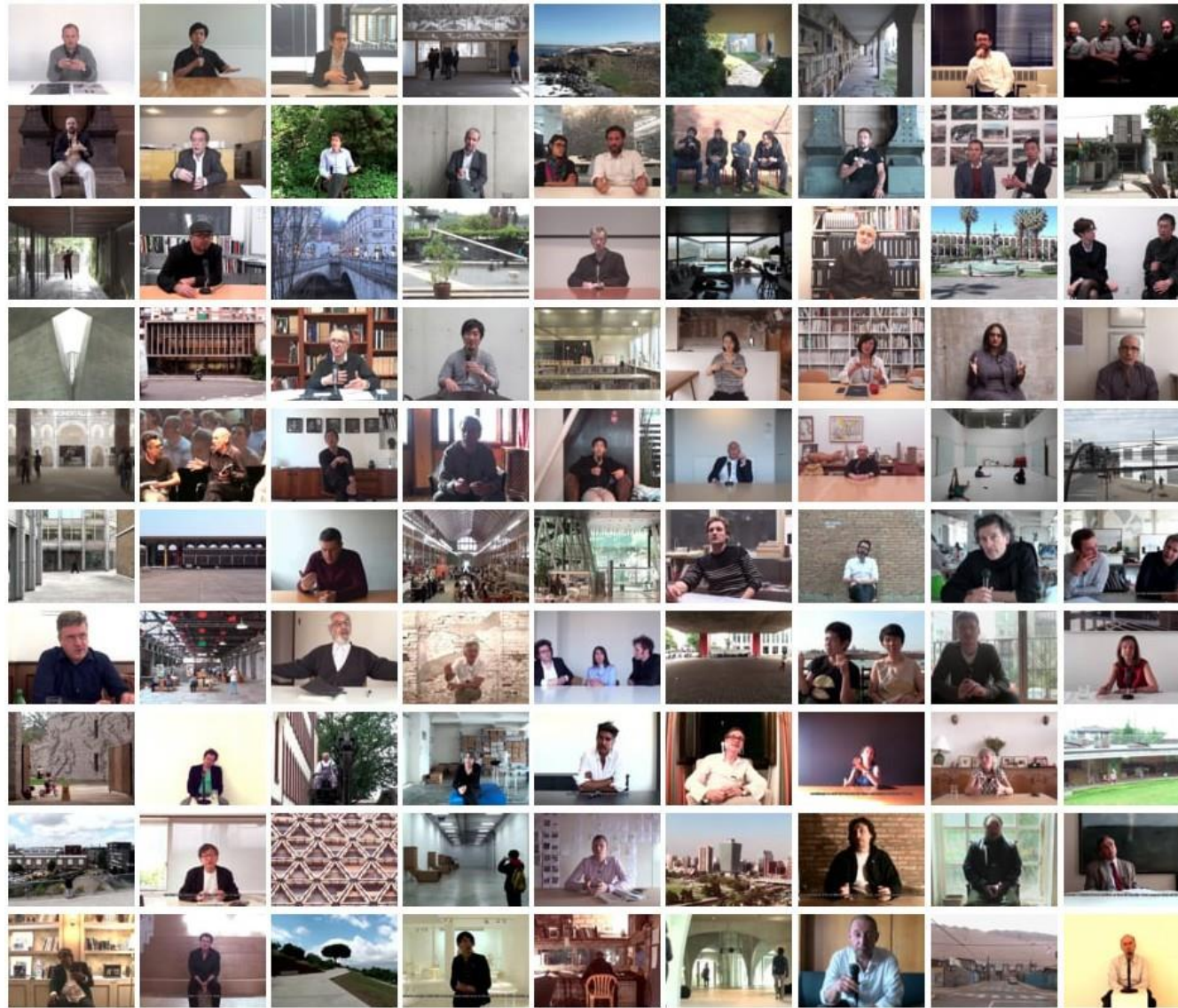
AUDIOVISUAL ARCHIVE FOR INSTITUTIONS

[www.onarchitecture.com](http://www.onarchitecture.com)



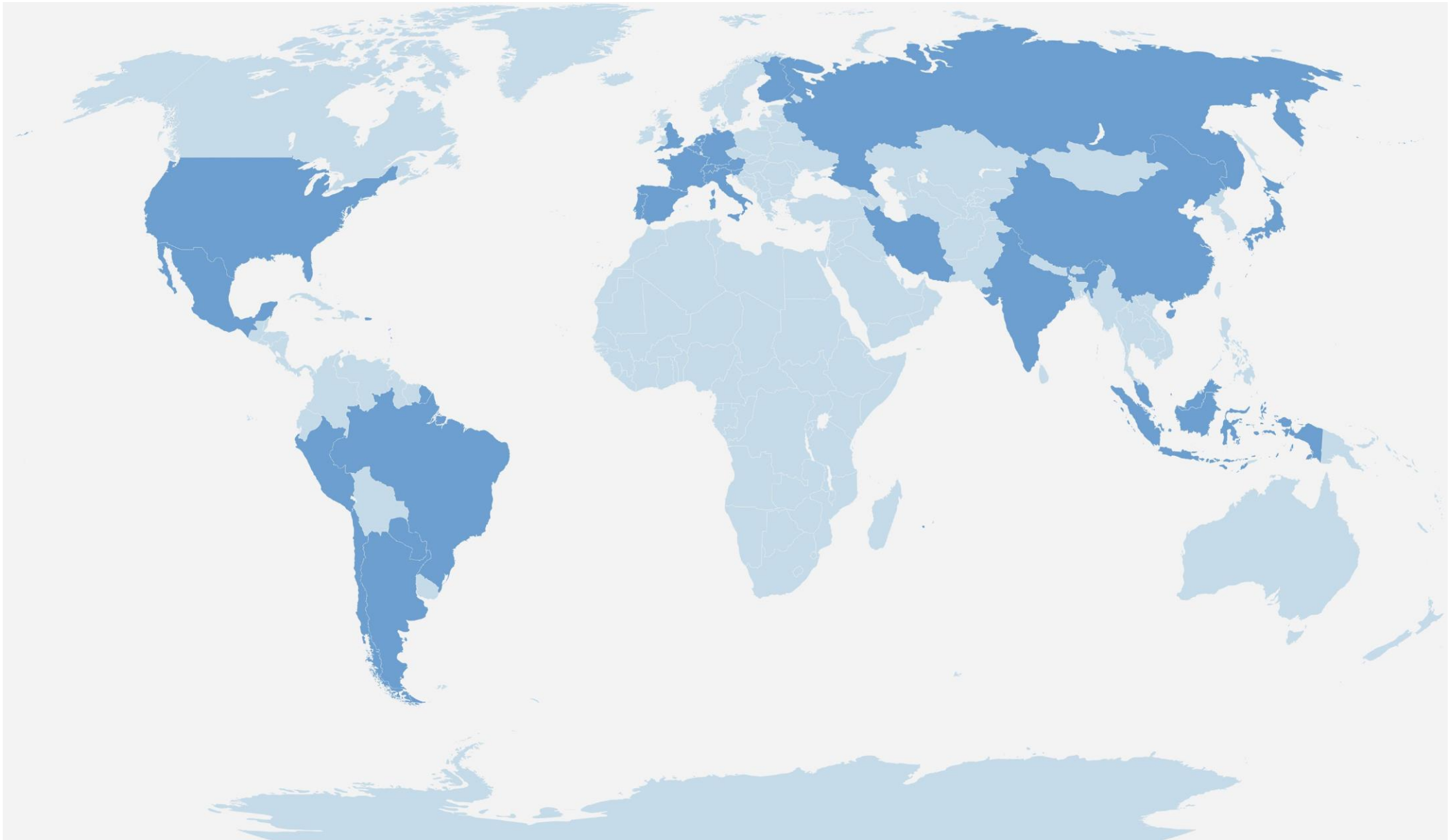
## What is OnArchitecture?

OnArchitecture is an audiovisual database for institutional users —architects, academics, researchers and students— currently subscribed by MIT, Yale, Columbia, Princeton, Cornell, PUC Architecture School in Chile, University of Toronto, Tokyo University of Science and many others.



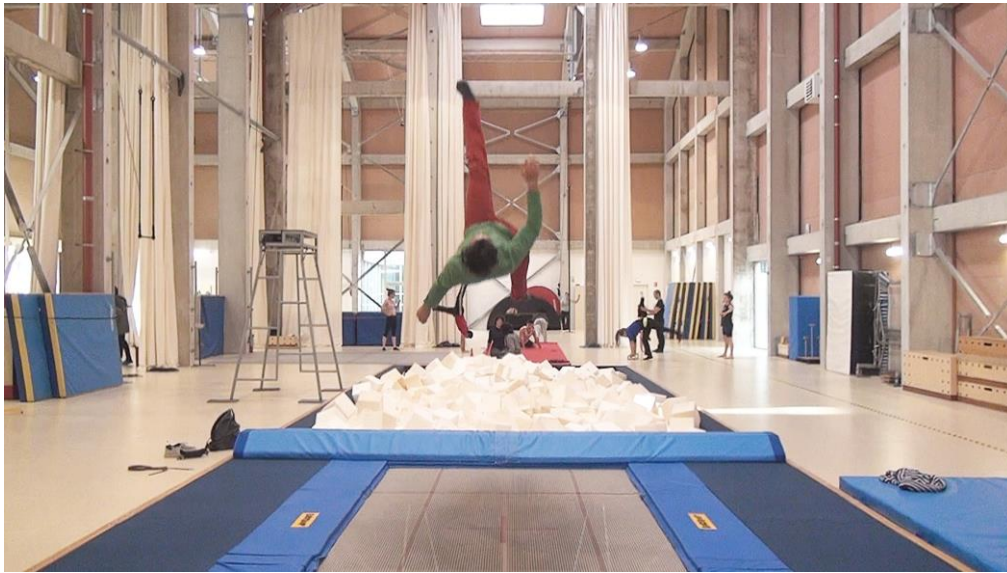
### **Which are the contents featured in OnArchitecture?**

OnArchitecture's content includes video-interviews to prominent architects throughout the world, audiovisual records of buildings and installations. Video production team is led by two Chilean architects and academics, Felipe de Ferrari & Diego Grass, with editorial and audiovisual experience. One unit filming, editing and producing first-hand content since 2008: 400 items (and counting) in our English database version. 250 items (and counting) in our Spanish database. Subscribed institutions can access both databases.



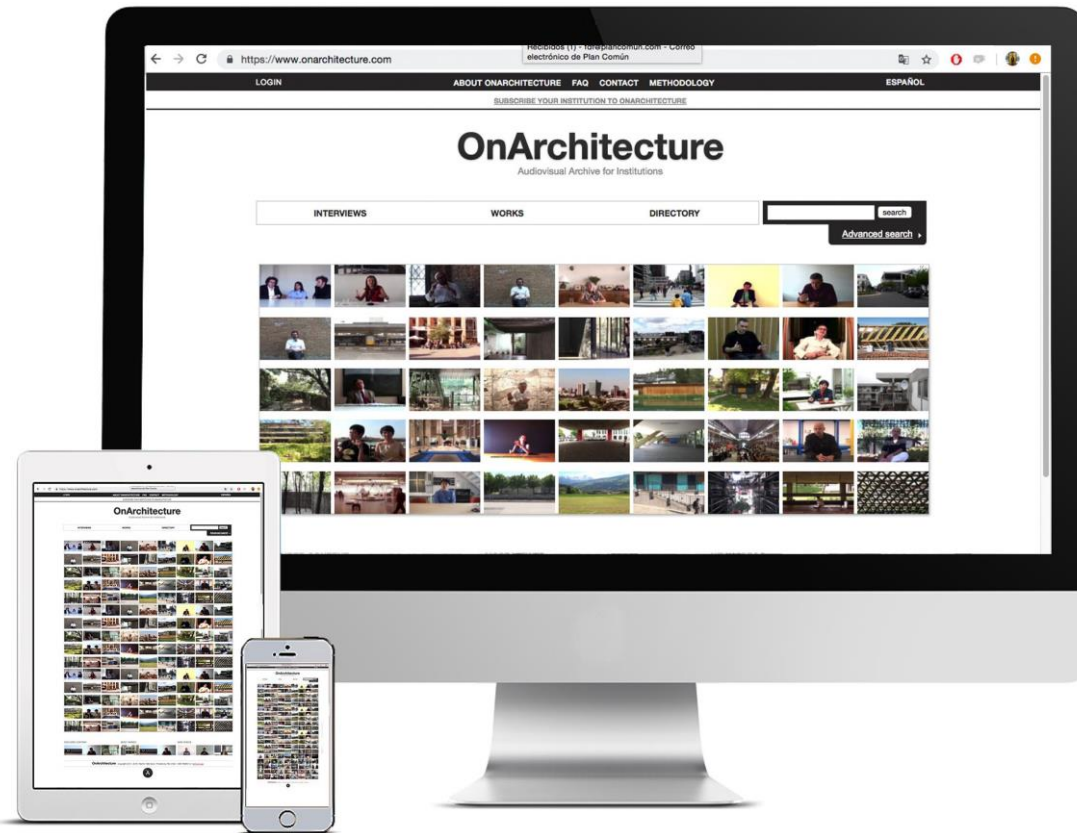
**Which are the contents featured in OnArchitecture? / Geography**

Videos of buildings and architects from Argentina, Austria, Belgium, Brazil, Chile, China, England, Finland, France, Germany, Holland, India, Indonesia, Italy, Japan, Malaysia, Mexico, Paraguay, Peru, Portugal, Russia, Singapore, Slovenia, Spain, Switzerland & the United States.



### **Which are the contents featured in OnArchitecture? / Programs**

Videos of buildings of different uses such as Collective housing, Commerce, Culture, Education, Exhibition, Government, Health, Hotel, Industry, Infrastructure, Museum, Offices, Park, Restored Buildings, Recreation and sports, Religious & Residential Buildings.



## How does OnArchitecture work? / Access

OnArchitecture is an online platform accessible through conventional web browsers. We recommend Google Chrome and Safari web browsers. No extra plug-ins are required, since the site uses standard HTML5 programming.

OnArchitecture provides simultaneous on-campus and remote access and is fully compatible with portable devices such as Notebooks, Netbooks, iPads, iPhones, Smartphones and many others, including operating systems such as Android and iOS, in all of their versions. OnArchitecture has multiple search criteria.


For access, IP authentication is strongly recommended. If an institution does not have IP authentication system, we can provide them username and password credentials.

**OnArchitecture**  
Audiovisual Archive for Institutions

INTERVIEWS   WORKS   DIRECTORY  

HOME

**Kersten Geers & David van Severen II**  
View   Edit   Track   Node export



**Information Interview**  
Date of recording: 2010  
Country: Belgium  
Language: English  
Subtitle: Spanish

**Extended transcription**  
Kersten Geers & David van Severen II

**Metadata**  
Download in XML Format

**Related works by author**

**Related interviews by author**

**Related Interviews**

**Abstract**  
Second interview with Belgian architects Kersten Geers and David van Severen, partners of Office KGDVS. On this record, they discuss artistic and architectural references of their work, their relationship with the office DOGMA and their position in Belgian and Dutch architectural scene.

**Author(s)** Kersten Geers & David van Severen/Office KGDVS

**Pub. date** 2013

**Subject terms**  
Beauty Belgian Architect Capitalism Marketing Political Ideologies And Attitudes Rhetoric Scale Drawings

**About the interviewee**  
Office KGDVS was founded in 2002 by Belgian architects Kersten Geers and David Van Severen. They represent a new generation who design direct forms reluctant to historic. Their most significant projects include the Border Crossing between Mexico and the United States (2004, together with Wohne loek) and the New Administrative Capital of South Korea (2005, together with DOGMA). Some of their most remarkable buildings include XPO Gallery in Kortrijk (2009), VOKA Building (2010) and House in Buggenhout (2011). They have become quite visible after they completed the Belgian Pavilion in 2008 Venice Architecture Biennial, curated by Moris King. Office KGDVS was also invited by Kazuyo Sejima to participate in 2010 Venice Architecture Biennial, where they won the Silver Lion for emerging architects.

**Source**  
Geers, K., van Severen, D., De Ferrari, F., & Grass, D. (Producer). (2010, 24 Dec 2013). Second interview to Kersten Geers and David van Severen (Office KGDVS). OnArchitecture institutional. Retrieved from <http://www.onarchitecture.com/interviews/kersten-geers-david-van-severen-1>

**Suggested bibliography**  
Some principles for the house as an interior. OFFICE Kersten Geers David Van Severen. (2013). A & U: architecture & urbanism, (8), 26-27.  
OFFICE Kersten Geers David Van Severen: City Villa, Brussels, Belgium 2009-2012. 2013). A & U: architecture & urbanism, (8), 8-17.  
OFFICE Kersten Geers David Van Severen: weekend house, Merchtem, Belgium 2009-2012. (2013). A & U: architecture & urbanism, (8), 8-17.  
Woodman, E., Ockman, J., Tamburini, P., Zanderigo, A., Geers, K., Severen, D., & Walker, E. (2012). OFFICE Kersten Geers, David Van Severen. 20: Revista Internacional De Arquitectura - International Architecture Review, (63).  
Ibelings, H., Geers, K., & Severen, D. (2011). The importance of being precise: Kersten Geers and David Van Severen talk about being half modern, half something else, based on a conviction that architecture has worked 'with more or less the same principles for three thousand years'. A10: New European Architecture, (37), 18-20.

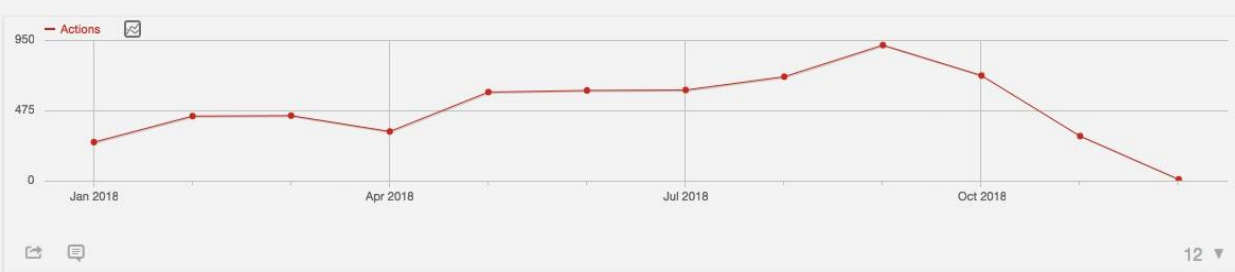
**Directory**

Our catalogue offers a selection of 400 videos of buildings, installations and interviews with the world's most distinguished authors. This videotheque is constantly revised, updated and indexed, in order to make it easier and efficient to search for particular subjects. The directory below is a tool to find contents by author, building's name, site location or by program.

Architects   Offices   Works   Country   **Program**   Tags   Topics

**Collective housing**  
[Alejandro Aravena / Elemental / Lo Barnechea Social Housing](#)   [Alejandro Aravena / Elemental / Quinta Monroy](#)   [Alejandro Aravena / Elemental / Quinta Monroy Settlers](#)  
[Alejandro Aravena / Elemental / Renca Social Housing](#)   [Anne Lacaton + Jean Philippe Vassal / Lacaton & Vassal / Tour Bois Le Prêtre](#)   [Le Corbusier / Cité Radieuse](#)  
[Quintus Miller + Paola Maranta / Miller & Maranta / Housing in Schwarzpark](#)   [Winy Maas / MVRDV / Slodam](#)  
[Madeleine Kessler + Mio Tsuneyama / MNM / House for seven people](#)   [Álvaro Benítez, Emilio De la Cerda, Tomás Folch / OWAR / Quinta Normal Social Housing](#)

**Commerce**  
[Jacques Herzog y Pierre de Meuron / Herzog & de Meuron / Prada Aoyama Epicenter](#)   [Kazuyo Sejima + Ryue Nishizawa / Sanaa / Hh.Style Shop](#)   [Takuto Sando+Motoo Chiba+Himari Saikawa+Masakazu Ishigure / Tsubame / Sumpachi Vegetable Store](#)



12 ▾

## How does OnArchitecture work? / Statistics & Metadata

We also provide real-time statistics available on an administrator platform which can be managed by the Library staff or School academics. It is possible to embed or use a direct link to OnArchitecture videos in academic resources handled by academics or students (syllabus, Learning Management System, VLE, Moodle, etc.).

Every video has a APA format citation included in every post.

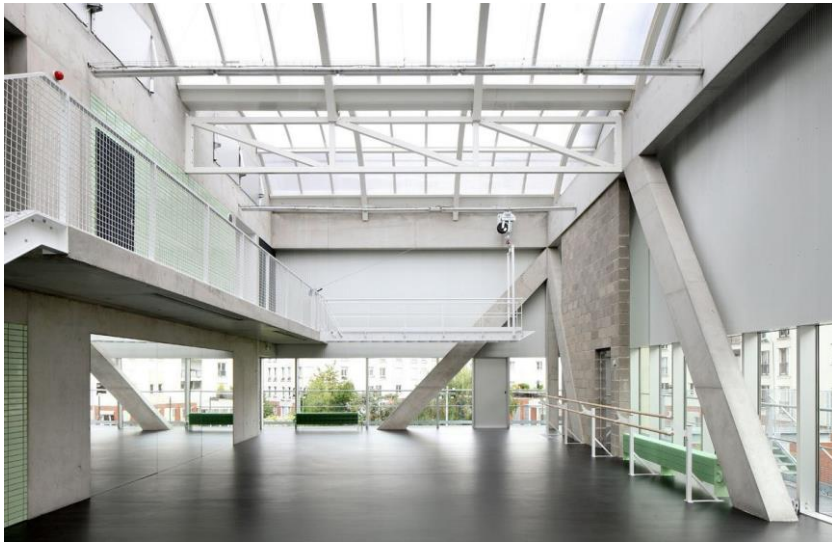
Every video has an XML metadata file which can be downloaded in every post and used to link OnArchitecture's content with institutional search engine.



### **Which are OnArchitecture's main features for academics?**

Academics are a key element in keeping OnArchitecture usage alive. They promote our catalogue in their syllabus, courses, Learning Management Systems, VLE, Moodle, etc. OnArchitecture is usually helpful in history and theory courses. OnArchitecture is also quite valuable in design studios because it provides first hand case studies of buildings with various programs and uses, together with many examples of relevant contemporary architecture.





### **And lastly, why portray buildings through videos and not just photograph them?**

OnArchitecture videos are tailored to provide the spatial experience that you cannot get from magazines, diagrams or blueprints: lived space, ambient sound, changes in natural and artificial light, atmospheres and users' movements. It provides a different point of view on the buildings we shoot: everyday life.

In addition, the so called Millennials and Centennials (the later now entering architecture school) are big consumers of video content and have adapted their ways of learning to this tool, assimilating skills and practices through video.



**Please contact your EBSCO Sales representatives for more information, trials and costs.**

[www.onarchitecture.com](http://www.onarchitecture.com)